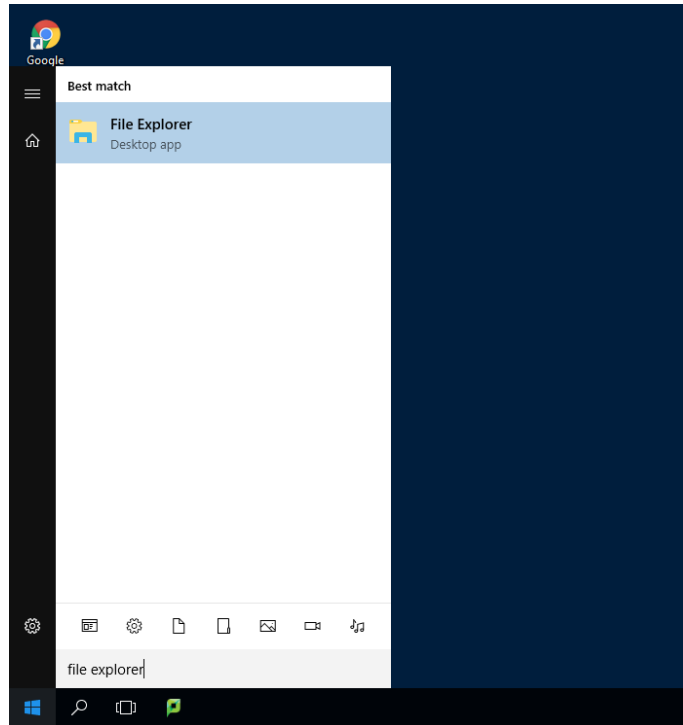
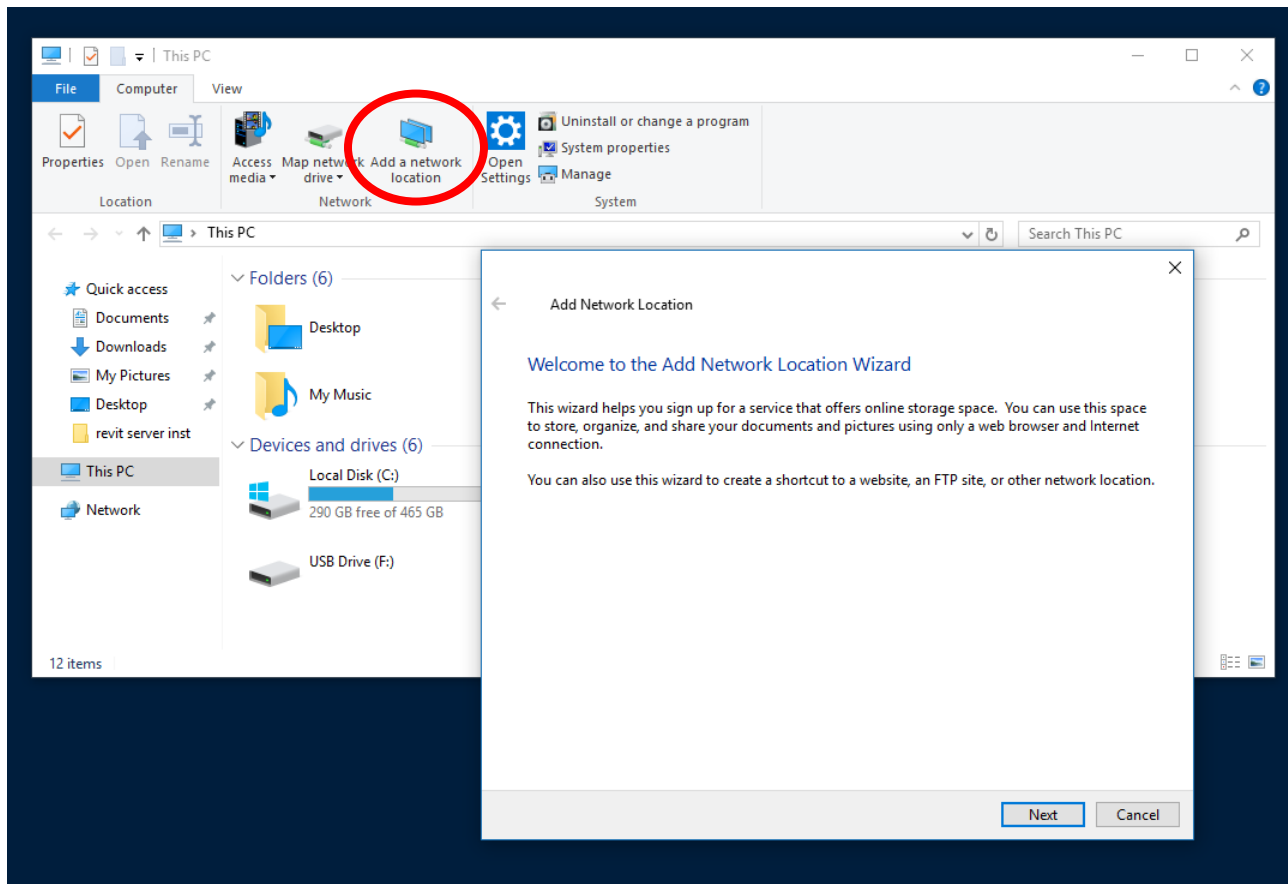


Remote Connection to Project Server

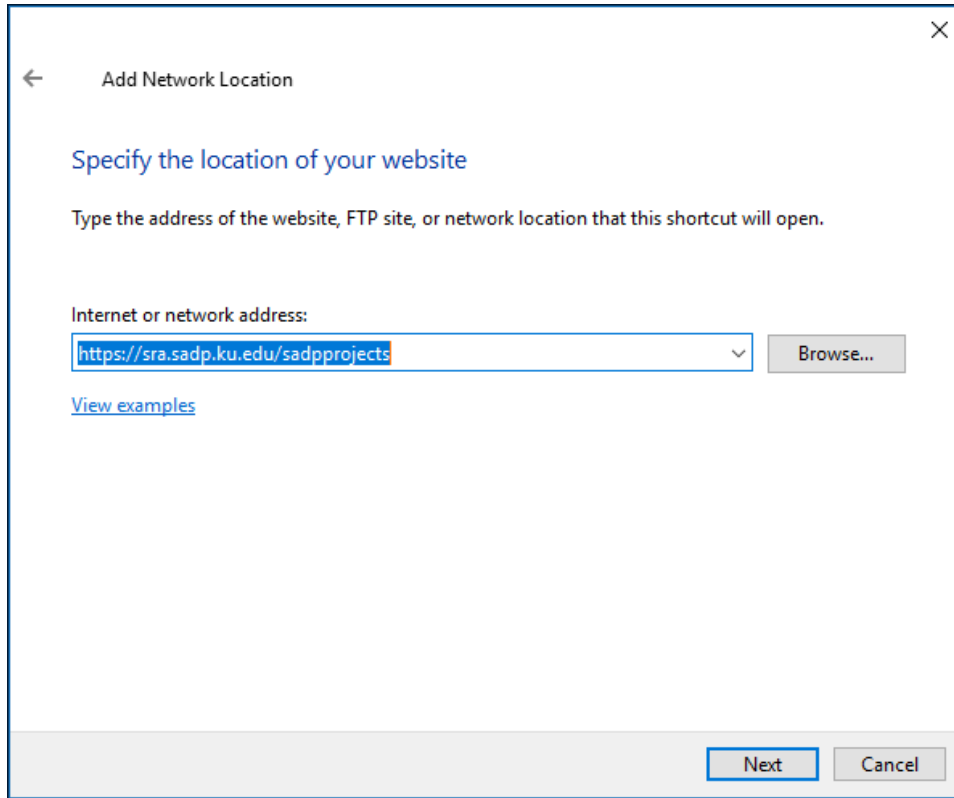
1. Open File Explorer by clicking the Windows icon lower left corner and search “File Explorer”:



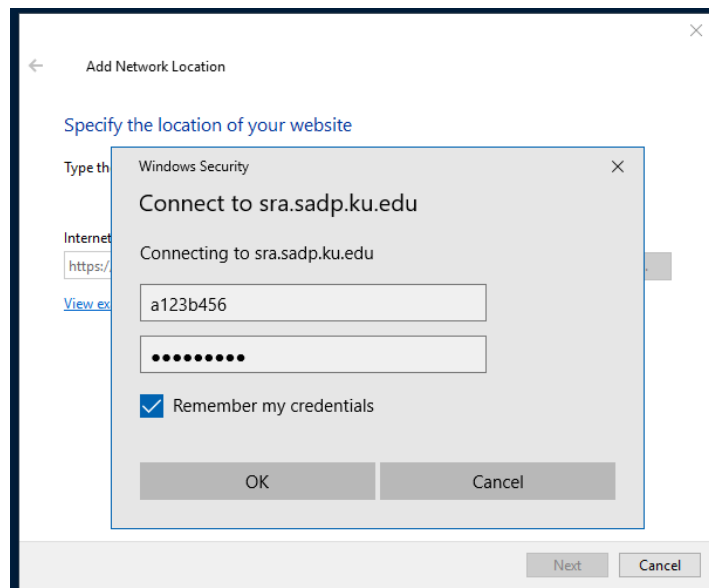
2. Click the “Add a network location” icon on ribbon bar:



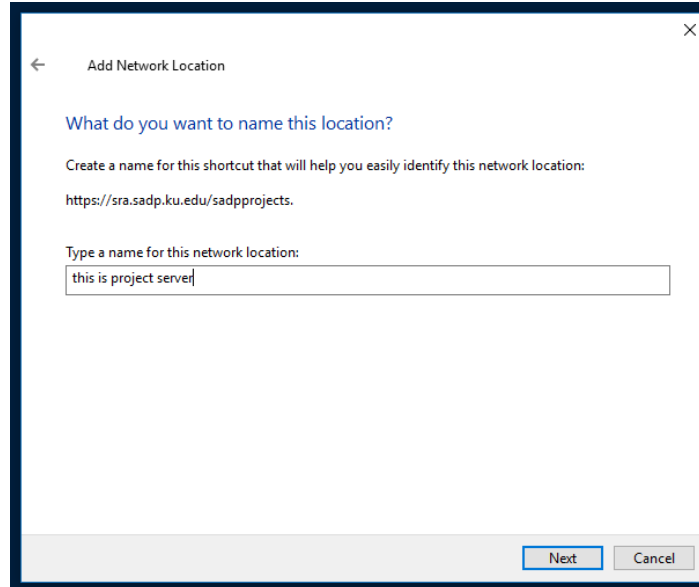
3. Click next in the wizard, and “Choose a custom network location” on the next screen. In the following screen, enter the URL <https://sra.sadp.ku.edu/sadpprojects> into the network location field. You have to get this exactly right:



4. Enter your KU credentials, and click to “Remember my credentials”:

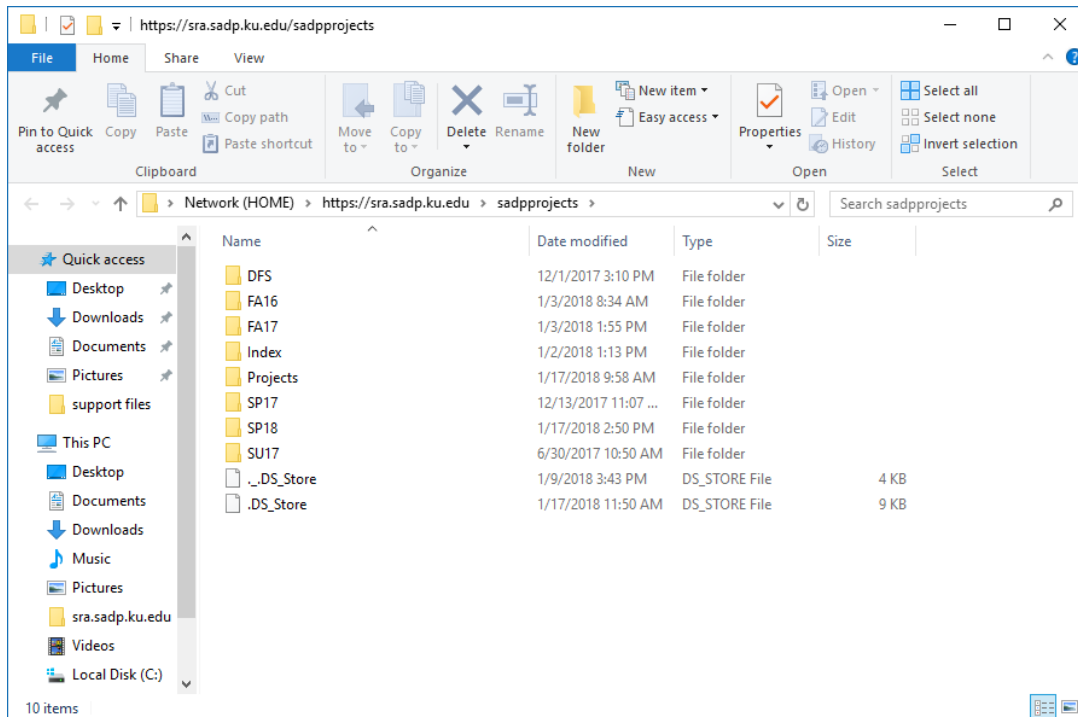


5. On the next screen, type in a name for the connection. This can be whatever you want, it's just to remind you of what it is.



6. Next you'll get a confirmation that the Wizard has succeeded, and will open the connection when you click Finish.

7. Success! Choose the current semester from the list and then find your course folder inside.



8. To find the connection again, simply open File Explorer as in Step 1 and look for the connection (remember what you named it):

